

Net è uno scaldasalviette il cui profilo rettangolare dei tubi orizzontali, si interseca al collettore circolare, dando una particolare linea al radiatore. La sua geometria si inserisce nello spazio della stanza da bagno, dando personalità all'ambiente. Net è disponibile in 4 altezze e 3 larghezze, anche nella versione con attacchi 50 mm. Con l'inserimento della resistenza elettrica (optional) può funzionare anche nei periodi in cui l'impianto è spento.



Net, altezza 1760 mm, larghezza 500 mm, Bianco Standard

Caratteristiche costruttive

radiatore scaldasalviette in acciaio con elementi orizzontali a tubi rettangolari di sezione 20x25 mm
collettori laterali rotondi con diametro 30 mm
filettature estremità collettore 1/2" Gas destra
pressione di esercizio massima ammessa 4 bar
temperatura di esercizio massima ammessa 95°C

Dotazione di serie

4 attacchi per fissaggio a muro regolabili in tinta con il radiatore
valvola sfiato da 1/2"

Certificazioni



Plus



Dati tecnici

Modello	Profondità (mm)	Altezza (mm)	Larghezza (mm)	Interasse (mm)	Peso (kg)	Capacità (lt)	$\Delta t=50^{\circ}\text{C}$ (kcal/h)	$\Delta t=50^{\circ}\text{C}$ (Watt)	$\Delta t=40^{\circ}\text{C}$ (Watt)	$\Delta t=30^{\circ}\text{C}$ (Watt)	$\Delta t=20^{\circ}\text{C}$ (Watt)	Esponente	Funz. misto (Watt)
01													
800 18 tubi 1 intervallo	67,0	800	500	470	7,70	4,60	384,0	447,0	340,0	239,0	145,0	1,230	400
800 18 tubi 1 intervallo	67,0	800	600	570	9,00	5,30	463,0	538,0	412,0	293,0	180,0	1,192	400
800 18 tubi 1 intervallo	67,0	800	750	720	10,90	6,40	580,0	674,0	518,0	370,0	229,0	1,176	700
1200 26 tubi 2 intervalli	67,0	1200	500	470	11,20	6,70	568,0	660,0	504,0	355,0	218,0	1,211	700
1200 26 tubi 2 intervalli	67,0	1200	600	570	13,00	7,80	676,0	786,0	602,0	426,0	263,0	1,197	700
1200 26 tubi 2 intervalli	67,0	1200	750	720	15,80	9,30	838,0	975,0	750,0	535,0	332,0	1,175	1000
1440 32 tubi 2 intervalli	67,0	1440	500	470	13,70	8,20	673,0	783,0	597,0	421,0	257,0	1,216	700
1440 32 tubi 2 intervalli	67,0	1440	600	570	15,90	9,50	800,0	930,0	712,0	504,0	310,0	1,200	1000
1440 32 tubi 2 intervalli	67,0	1440	750	720	19,30	11,40	989,0	1.150,0	885,0	631,0	392,0	1,175	1000
1760 38 tubi 3 intervalli	67,0	1760	500	470	16,40	9,80	810,0	942,0	718,0	507,0	310,0	1,214	1000
1760 38 tubi 3 intervalli	67,0	1760	600	570	19,00	11,30	960,0	1.116,0	854,0	605,0	372,0	1,198	1000
1760 38 tubi 3 intervalli	67,0	1760	750	720	23,00	13,70	1.184,0	1.377,0	1.060,0	756,0	470,0	1,174	1000
05													
800 18 tubi 1 intervallo	67,0	800	500	50	7,70	4,60	384,0	447,0	340,0	239,0	145,0	1,230	400
800 18 tubi 1 intervallo	67,0	800	600	50	9,00	5,30	463,0	538,0	412,0	293,0	180,0	1,192	400
800 18 tubi 1 intervallo	67,0	800	750	50	10,90	6,40	580,0	674,0	518,0	370,0	229,0	1,176	700

1200 26 tubi 2 intervalli	67,0	1200	500	50	11,20	6,70	568,0	660,0	504,0	355,0	218,0	1,211	700
1200 26 tubi 2 intervalli	67,0	1200	600	50	13,00	7,80	676,0	786,0	602,0	426,0	263,0	1,197	700
1200 26 tubi 2 intervalli	67,0	1200	750	50	15,80	9,30	838,0	975,0	750,0	535,0	332,0	1,175	1000
1440 32 tubi 2 intervalli	67,0	1440	500	50	13,70	8,20	673,0	783,0	597,0	421,0	257,0	1,216	700
1440 32 tubi 2 intervalli	67,0	1440	600	50	15,90	9,50	800,0	930,0	712,0	504,0	310,0	1,200	1000
1440 32 tubi 2 intervalli	67,0	1440	750	50	19,30	11,40	989,0	1.150,0	885,0	631,0	392,0	1,175	1000
1760 38 tubi 3 intervalli	67,0	1760	500	50	16,40	9,80	810,0	942,0	718,0	507,0	310,0	1,214	1000
1760 38 tubi 3 intervalli	67,0	1760	600	50	19,00	11,30	960,0	1.116,0	854,0	605,0	372,0	1,198	1000
1760 38 tubi 3 intervalli	67,0	1760	750	50	23,00	13,70	1.184,0	1.377,0	1.060,0	756,0	470,0	1,174	1000

(*) Grazie alle elevate prestazioni dei radiatori Net, il Δt ideale per la progettazione a bassa temperatura è 30°C

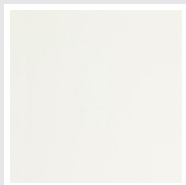
Per Δt diversi da 50°C utilizzare la formula: $Q=Q_n (\Delta t / 50)^n$

Dotazione di serie

- 4 attacchi per fissaggio a muro regolabili in tinta con il radiatore • valvola sfiato da 1/2"

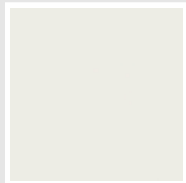
Colori e finiture

STANDARD

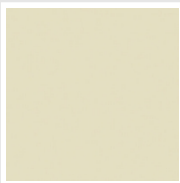


Bianco Standard
Cod. 01

CLASSIC



Bianco Edelweiss
Cod. 34



Avorio - RAL 1013
Cod. 02



Beige Cream
Cod. 26



Giallo - RAL 1021
Cod. 04



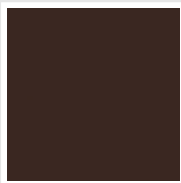
**Giallo Melone -
RAL 1028**
Cod. E7



Arancio - RAL 2004
Cod. 17



**Marrone Ruggine -
RAL 8004**
Cod. E1



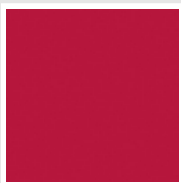
Marrone - RAL 8017
Cod. 09



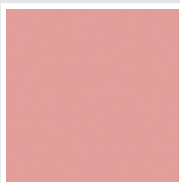
**Amaranto - RAL
3003**
Cod. 06



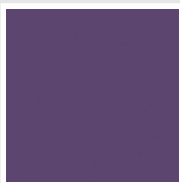
Rosso - RAL 3000
Cod. 05



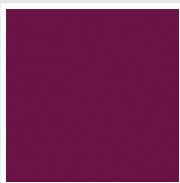
**Rosso Fragola -
RAL 3018**
Cod. Y3



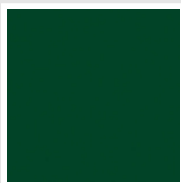
Rosa - RAL 3015
Cod. R2



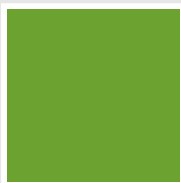
**Lilla Bluastro - RAL
4005**
Cod. R3



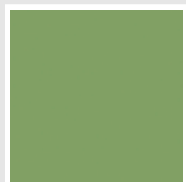
**Porpora Traffico -
RAL 4006**
Cod. R6



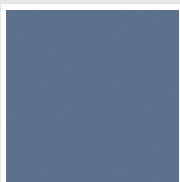
**Verde Bosco - RAL
6005**
Cod. 19



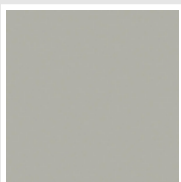
**Verde Erba - RAL
6018**
Cod. N3



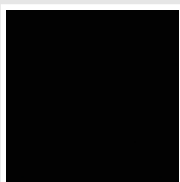
**Verde Salvia - RAL
6021**
Cod. E6



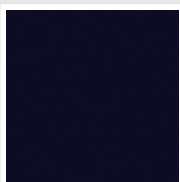
**Blu Pastello - RAL
5024**
Cod. G7



Grigio Manhattan
Cod. 03

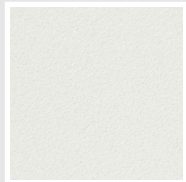


Nero - RAL 9005
Cod. 10

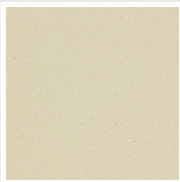


Deep Blue
Cod. 2F

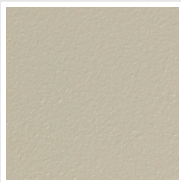
SPECIAL



Bianco Perla
Cod. 16



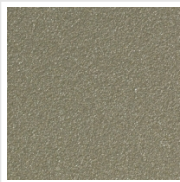
Quartz 1
Cod. 1C



Sablé
Cod. Y4



Quartz 2
Cod. 2C



Sunstone
Cod. 2D



Bruno Tabacco
Cod. 1B



Flame Red
Cod. 7D



Purple Blue
Cod. 1D



Azurite 3
Cod. 6C

Grigio Medio
Cod. 4D

**Grigio Titanio
Metallizzato - RAL
9023**
Cod. L3

Grigio Perla
Cod. L6

Nero Grafite
Cod. 18

Grigio Quarzo
Cod. 31

Nero Satinato
Cod. 30

Bianco Opaco
Cod. J8



Nero Opaco
Cod. K1

Agave
Cod. 9N

Blu Baltico
Cod. 1P

Ghiaccio
Cod. 3P

**Blu Colomba
Opaco - RAL 5014**
Cod. 4P

**Grigio Chiaro
Opaco**
Cod. 8N

**Grigio Cenere - Ral
7021**
Cod. G1

Grigio Martellato
Cod. 32



Rame Martellato
Cod. J4

RAL



Altri colori RAL (previa fattibilità)
Cod. ALTRIRAL

I colori rappresentati in questa cartella non sono da considerarsi impegnativi. I diversi processi tecnologici di verniciatura ed i materiali utilizzati per la realizzazione possono non avere una perfetta corrispondenza cromatica con il prodotto consegnato. L'azienda Irsap si riserva la facoltà di apportare in qualsiasi momento tutte le modifiche necessarie per il miglioramento del prodotto.